



ST. LAWRENCE HIGH SCHOOL

A JESUIT CHRISTIAN MINORITY INSTITUTION

Second Term Examination - 2018



Class : 7

Sub : Life Science

F.M.: 90

DURATION: 2 Hrs 30 Mins

DATE: 01.08.2018

Group A

1. Choose the correct option: 1x5=5
 - a. In tropic movement a plant part moves- away from the stimulus/ towards the stimulus/ in all directions/ towards or away from the stimulus
 - b. Euglena moves with the help of- cilia/ flagella/ tentacles/ pseudopodia
 - c. Soyabean is rich in- protein/ fat/ carbohydrate/ minerals
 - d. Essential element for protein synthesis is- iron/ nitrogen/ phosphorus/ calcium
 - e. Total number of incisors in our jaws is- 4/ 8/ 12/ 16

2. Fill in the blanks: 1x10=10
 - a. An adult human has _____ permanent teeth
 - b. The liver secretes _____.
 - c. Trypsin converts proteins to _____.
 - d. _____ plants are known as autotrophs
 - e. The end product of photosynthesis is _____ and oxygen
 - f. Rhizobium lives within plant _____
 - g. A stomata passes two _____ cells
 - h. The skull contains _____ joints
 - i. Amoeba moves by projecting _____.
 - j. Muscles are attached to bones by _____

3. State true or false: 1x10=10
 - a. Pancreas secretes bile
 - b. HCl is secreted in stomach
 - c. Digestion of food starts in stomach
 - d. Ligaments attach muscles with bones
 - e. The nyctinastic movement is also called sleep movement
 - f. Auxin is a plant hormone
 - g. Bipedal movement is seen in women
 - h. Lichen is a symbiont
 - i. Vitamin A gives high energy
 - j. Hardened plaque is called tartar.

Group B

4. Answer the following: 2x5=10
- a. Name two enzymes secreted by stomach
 - b. Name the parts of small intestine
 - c. Name two insectivorous plants
 - d. What are stomata?
 - e. What is cartilage?
5. Answer any five: 3x5=15
- a. Why iron and calcium are essential for our health?
 - b. Why do we need food?
 - c. What do you mean by calorie value of food?
 - d. How Mastication helps in digestion?
 - e. What is assimilation?
 - f. What is flexor muscle?
 - g. What is the locomotory organ of hydra?

Group C

6. Answer any eight: 5x8=40
- a. Name the types of moveable joints and their location in human body.
 - b. How water is vital for our body?
 - c. How is food absorbed by our body?
 - d. Draw the diagram of four different types of teeth and name them.
 - e. Describe the function of small intestine
 - f. Where the salivary glands located and what are are their functions?
 - g. How are parasites, saprophytes and symbionts different from each other?
 - h. Describe the function of vitamin A and vitamin B
 - i. Draw a diagram of human digestive system
 - j. Mention the different types of teeth and their respective functions.



ST. LAWRENCE HIGH SCHOOL

A JESUIT CHRISTIAN MINORITY INSTITUTION

Sulzerah Saeed 2/8/18



Second Term Test - 2018

Sub: _____ Life Science _____ Class: _____ 7 _____ F. M. _____ 90 _____

Duration: _____ 2 hr 30 min _____

Date: _____ 01/08/2018 _____

Model Answers

1. Choose the correct answer:

- a. Towards or away from the stimulus
- b. Flagella
- c. Protein
- d. Nitrogen
- e. 4

2. Fill in the blanks:

- a. 32
- b. Bile
- c. Peptide
- d. Green
- e. Glucose
- f. Root
- g. Guard
- h. Fixed
- i. Pseudopodia Tendon

3. State true or flare:

- a. False
- b. True
- c. False
- d. False
- e. True
- f. True
- g. True
- h. True
- i. False
- j. True

4. Answer the following:

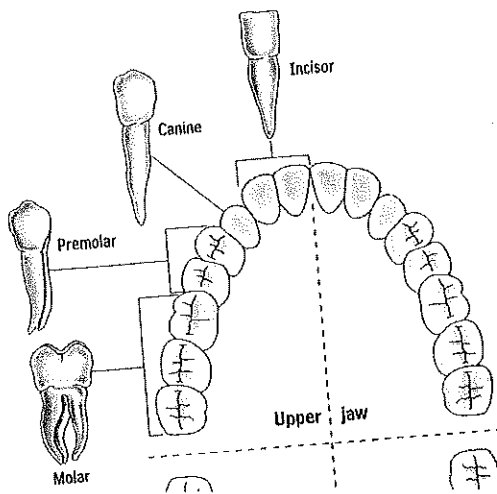
- a. Pepsin, renin
- b. Duodenum, jejunum, ilium
- c. Sundew, pitcher plant
- d. Opening of the leaves
- e. Cartilage is a smooth resilient elastic tissue present in joints

5. Answer any five:

- a. Iron forms hemoglobin, carries out gaseous exchange; calcium forms calcium phosphate in presence of Vitamin D and forms bone
- b. We need food to meet our requirement of energy and to get the materials needed for growth and repair
- c. The amount of heat energy produced by the oxidation of a particular type of food is called calorie value of food.
- d. The process of mechanically breaking down the food in mouth by the process of chewing by our teeth is called mastication.
- e. The process of absorption and digestion of food or nutrients by the body or any biological system
- f. Muscles which pull the bone towards the body are called flexor muscle.
- g. Tentacles are the locomotory organs of hydra. They move by forming loop or somersaults. Both tentacles and the basal part of the body are the organs of locomotion.

6. Answer any eight:

- a. The moveable joints are-(1) Fully moveable-• Pivot— neck • Hinge — knee • Ball and socket shoulder joint (ii) Partially moveable-• Vertebral column, etc.
- b. 70% of our body is formed of water. Water is essential for the functioning of the body, though it is not a nutrient. In every food or nutrient, water is the basic element. For digestion, assimilation or absorption water is needed. Water is needed also for proper bowel movement
- c. In the ileum the villi living increases the surface area. Through this ileum digested food are absorbed. Digested food molecules enter the blood stream through the walls of the capillaries. The blood carries them to the rest of the body.
- d.



- e. Small intestine helps in digesting and absorbing the food. It is divided into duodenum, jejunum and ileum. The semi liquid chyme enters the duodenum; various enzymes are secreted inside the small intestine which helps in digestion, like amylase, lipase and trypsin. These enzymes break the food into their basic molecules
- f.

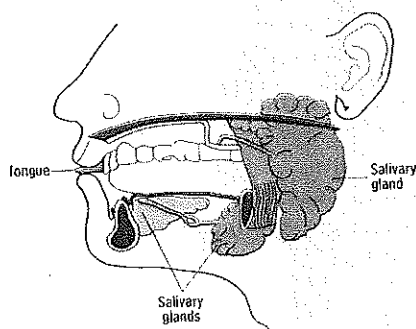


Fig. 5.5 Salivary glands

Salivary glands are present in mouth are sub lingual, submandibular, maxillary. Chewed food in the mouth mixes with saliva, which contains the enzyme amylase. Amylase starts the process of the breaking down of starch into simple sugar.

- g. Parasites, saprophytes, symbionts are types of heterotrophs. Parasites live on a living body, takes both food and shelter. Saprophytes live on decomposing plant and animal matter. Symbionts take shelter but in lieu help the host organism.
- h. Vitamin A deficiency causes night blindness and dryness of eyes Vitamin B deficiency causes beriberi, loss of appetite, weakness, and amnesia.
- i.

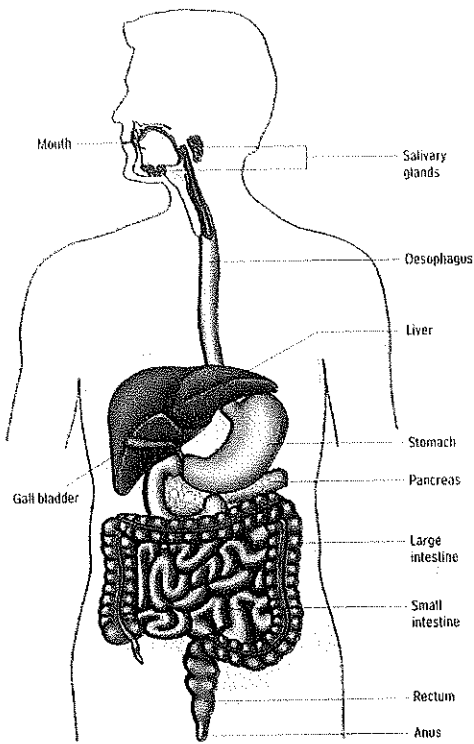


Fig. 5.3 The human digestive system

- j. Incisor teeth help in cutting the food. Canine teeth are used for tearing food and the premolar and molars for crushing and grinding food. These 4 types of teeth help in smashing the food and helps in next step of digestion