



ST. LAWRENCE HIGH SCHOOL

A JESUIT CHRISTIAN MINORITY INSTITUTION



Sub: Physical Science

Class: 8

Date: 01.02.21

Duration: 40 min

Worksheet 06

Full Marks: 15

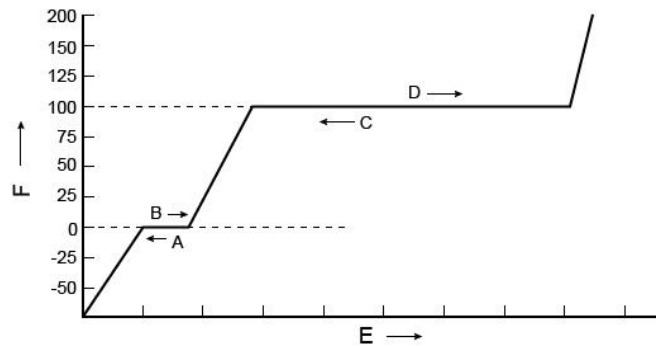
MATTER

Choose the Correct options:

1. When water changes into water vapor, this is called .
 - a. condensation
 - b. fusion
 - c. precipitation
 - d. evaporation
2. Which of the following is NOT a phase of matter?
 - a. Gas
 - b. Solution
 - c. Liquid
 - d. Solid
3. Sublimation is a change from a
 - a. solid to a liquid.
 - b. gas to a liquid.
 - c. solid to a gas.
 - d. liquid to a solid.
4. Matter is made of .
 - a. ether
 - b. particles
 - c. gravity
 - d. energy
5. Vaporization that takes place inside a liquid is called .
 - a. evaporation
 - b. boiling
 - c. condensation
 - d. sublimation
6. Liquids form into
 - a. any shape.
 - b. the shape of their container.
 - c. no shape.
 - d. None of these
7. When water freezes, it turns into .
 - a. water
 - b. ice
 - c. water vapor
 - d. steam
8. When ice melts, it turns into a .
 - a. solid
 - b. liquid
 - c. gas
 - d. plasma
9. When water evaporates, it turns into .
 - a. water vapor
 - b. water
 - c. ice

d. Bose-Einstein Condensate

10. Which letter on the diagram best represents when melting occurs?



- a. A
- b. B
- c. C
- d. E

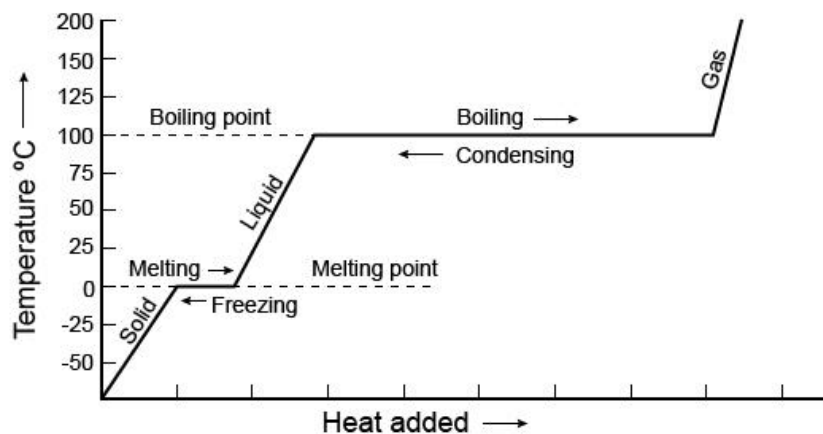
11. The motion of the particles is most orderly in .

- a. solids
- b. liquids
- c. gases
- d. solvents

12. Which is true regarding the Kinetic model of solids?

- a. There are strong forces of attraction between the particles.
- b. The particles move around freely.
- c. There are great open spaces between the particles.
- d. The particles move great distances before they collide.

13. The temperature at which the substance is melting is _____ the temperature at which the substance is freezing.



- a. less than
- b. more than
- c. the same as
- d. None of these

14. Solids have a crystal lattice because the particles

- a. vibrate around fixed positions.
- b. move in all directions.
- c. attract one another strongly.
- d. are not compressible at all.

15. Which statement about the Law of Conservation of Mass is NOT true?
- a. The mass of reactants must equal the mass of products.
 - b. All the atoms on the reactants side of an equation are also on the products side.
 - c. The reaction creates new types of atoms.
 - d. Atoms are not lost, but are rearranged.