



# ST. LAWRENCE HIGH SCHOOL

A JESUIT CHRISTIAN MINORITY INSTITUTION



**Sub: Algebra and Geometry**

**Class: 7**

**Date: 27.07.20**

**Duration: 40 min**

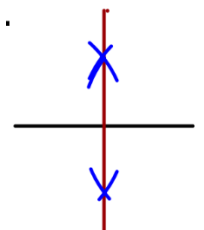
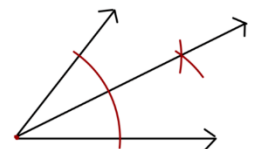
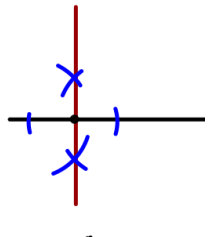
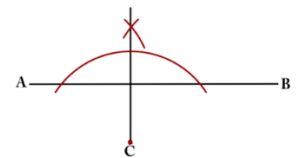
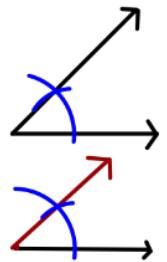
**Worksheet 59**

**Full Marks: 15**

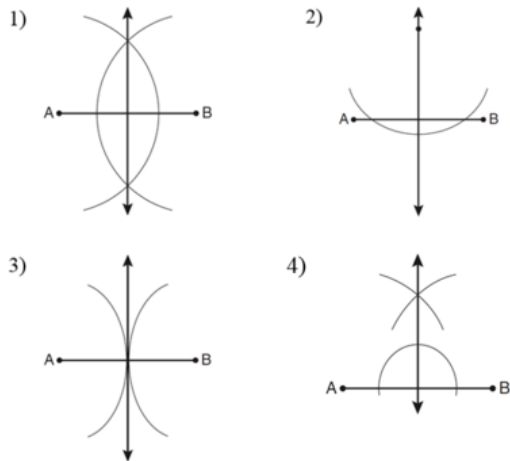
**Construction**

**Choose the Correct options:**

1. What does the word BISECT mean?
  - (a) To cut something into more than five pieces.
  - (b) It is a plane with two sets of wings.
  - (c) A shape that has three sides.
  - (d) To cut something into two congruent pieces or in half.
2. What is this construction?
  - (a) Angle Bisector
  - (b) Segment Bisector
  - (c) Creating Parallel Line
  - (d) Congruent Angle
3. What is this construction?
  - (a) Angle Bisector
  - (b) Line segment perpendicular to a given line through a given point on the line segment
  - (c) Line segment perpendicular to a given line through a given point not on the line segment
  - (d) Congruent Angle
4. What is this construction?
  - (a) Angle Bisector
  - (b) Line segment perpendicular to a given line through a given point on the line segment
  - (c) Line segment perpendicular to a given line through a given point not on the line segment
  - (d) Congruent Angle
5. What is this construction?
  - (a) Angle Bisector
  - (b) Line segment perpendicular to a given line through a given point on the line segment
  - (c) Line segment perpendicular to a given line through a given point not on the line segment
  - (d) Congruent Angle
6. What is this construction?
  - (a) Segment Bisector
  - (b) Line segment perpendicular to a given line through a given point on the line segment
  - (c) Line segment perpendicular to a given line through a given point not on the line segment
  - (d) Congruent Segment



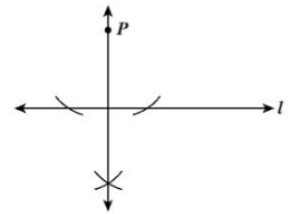
7. Which one is the correct construction for a perpendicular bisector?



- (a) 1
- (b) 2
- (c) 3
- (d) 4

8. This construction forms a \_\_\_\_\_.

- (a) Perpendicular Bisector
- (b) Perpendicular Line from a point not on the line
- (c) Perpendicular Line from a point on the line
- (d) Line Segment

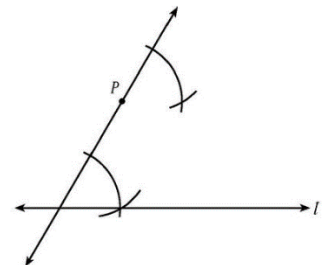


9. A figure formed by two rays, or sides, with a common endpoint

- (a) Length
- (b) Plane
- (c) Angle
- (d) degree

10. Marsha is using a straightedge and compass to do the construction shown. Which best describes the construction Marsha is doing?

- (a) a line through P parallel to line l
- (b) a line through P intersecting line l
- (c) a line through P congruent to line l
- (d) a line through P perpendicular to line l



11. Lines in the same plane that do not intersect.

- (a) Plane
- (b) parallel lines
- (c) line
- (d) perpendicular lines

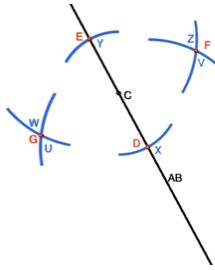
12. An angle that measures exactly  $90^\circ$

- (a) Acute Angle
- (b) Right Angle
- (c) Triangle
- (d) Straight Angle

13. An angle that measures greater than 0 degrees and less than 90 degrees.

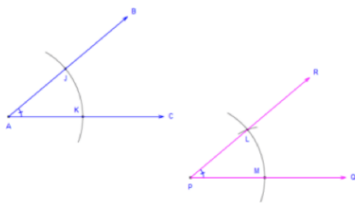
- (a) Triangle
- (b) Acute Angle
- (c) Right Angle
- (d) Obtuse Angle

14. What is this construction?



- (a) Perpendicular Bisector
- (b) Perpendicular Through Point Not On Line
- (c) Parallel Line Through Given Point
- (d) Perpendicular Line Through Point On Line

15. According to the diagram, this construction is:



- (a) a segment bisector
- (b) a line perpendicular to a segment
- (c) both a segment bisector and a line perpendicular to a segment
- (d) neither