



# ST. LAWRENCE HIGH SCHOOL

A JESUIT CHRISTIAN MINORITY INSTITUTION



**Sub: Physical Science**

**Class: 8**

**Date: 01.02.21**

**Duration: 40 min**

**Worksheet Solution 06**

**Full Marks: 15**

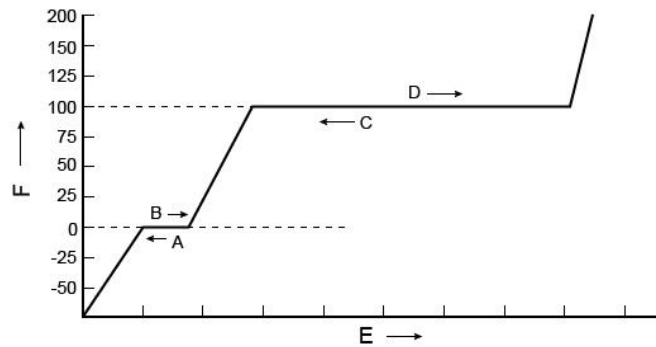
## **MATTER**

### **Choose the Correct options:**

1. When water changes into water vapor, this is called .
  - a. condensation
  - b. fusion
  - c. precipitation
  - d. evaporation**
2. Which of the following is NOT a phase of matter?
  - a. Gas
  - b. Solution**
  - c. Liquid
  - d. Solid
3. Sublimation is a change from a
  - a. solid to a liquid.
  - b. gas to a liquid.
  - c. solid to a gas.**
  - d. liquid to a solid.
4. Matter is made of .
  - a. ether
  - b. particles**
  - c. gravity
  - d. energy
5. Vaporization that takes place inside a liquid is called .
  - a. evaporation
  - b. boiling**
  - c. condensation
  - d. sublimation
6. Liquids form into
  - a. any shape.
  - b. the shape of their container.**
  - c. no shape.
  - d. None of these
7. When water freezes, it turns into .
  - a. water
  - b. ice**
  - c. water vapor
  - d. steam
8. When ice melts, it turns into a .
  - a. solid
  - b. liquid**
  - c. gas
  - d. plasma
9. When water evaporates, it turns into .
  - a. water vapor**
  - b. water
  - c. ice

d. Bose-Einstein Condensate

10. Which letter on the diagram best represents when melting occurs?



- a. A
- b. B**
- c. C
- d. E

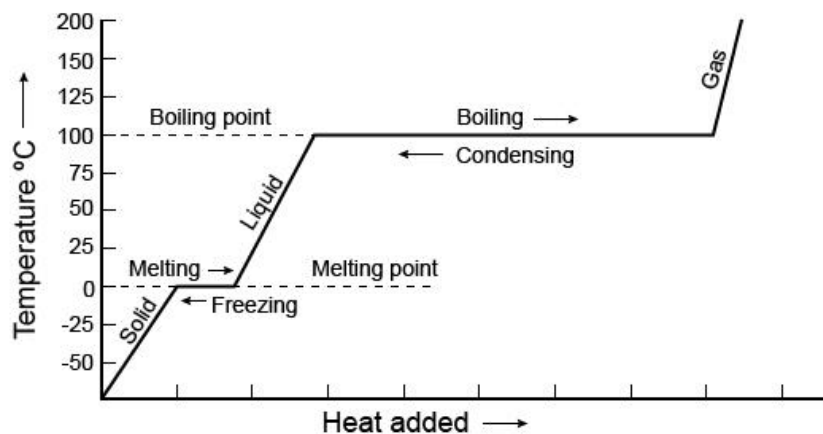
11. The motion of the particles is most orderly in .

- a. solids**
- b. liquids
- c. gases
- d. solvents

12. Which is true regarding the Kinetic model of solids?

- a. There are strong forces of attraction between the particles.**
- b. The particles move around freely.
- c. There are great open spaces between the particles.
- d. The particles move great distances before they collide.

13. The temperature at which the substance is melting is \_\_\_\_\_ the temperature at which the substance is freezing.



- a. less than
- b. more than
- c. the same as**
- d. None of these

14. Solids have a crystal lattice because the particles

- a. vibrate around fixed positions.**
- b. move in all directions.
- c. attract one another strongly.
- d. are not compressible at all.

15. Which statement about the Law of Conservation of Mass is NOT true?
- a. The mass of reactants must equal the mass of products.
  - b. All the atoms on the reactants side of an equation are also on the products side.
  - c. The reaction creates new types of atoms.**
  - d. Atoms are not lost, but are rearranged.