



1. Fill in the blanks:-

- a) A dog has a limited **lifespan**.
- b) Every egg has an outer **shell** that protects the baby inside it.
- c) Some animals reproduce by laying **eggs** and some give **birth** to young ones.
- d) The **puppies** grow into adult dogs like their parents.
- e) The shell has tiny **pores** that allow **air** to pass through.

2. Name the following:-

- a) The thick jelly- like substance inside the shell is called – **Egg White or Albumen**
- b) The yellow portion within the albumen is called – **Yolk**
- c) The process by which some birds keep their eggs warm by sitting on them is known as – **Incubation**
- d) The yolk contains a developing baby called – **Embryo**
- e) The process by which animals produce young ones of their own kind is known as - **Reproduction**

3. Write true or false:-

- a. The process by which animals produce young ones of their own kind is known as reproduction. **True**
- b) The embryo inside the egg does not need warm conditions to develop. **False**
- c) The stages of development from an embryo to an adult form is called life cycle. **True**
- d) All animals reproduce by giving birth to their young ones. **False**
- e) The tiny pores on the shell enable the baby to breathe inside the egg. **True**

4. Answer in one or two words:-

- a) What protects the yolk and the embryo?

Ans: Albumen

- b) What protects the baby inside an egg?

Ans: Shell

- c) Which part of an egg contains food for the developing baby?

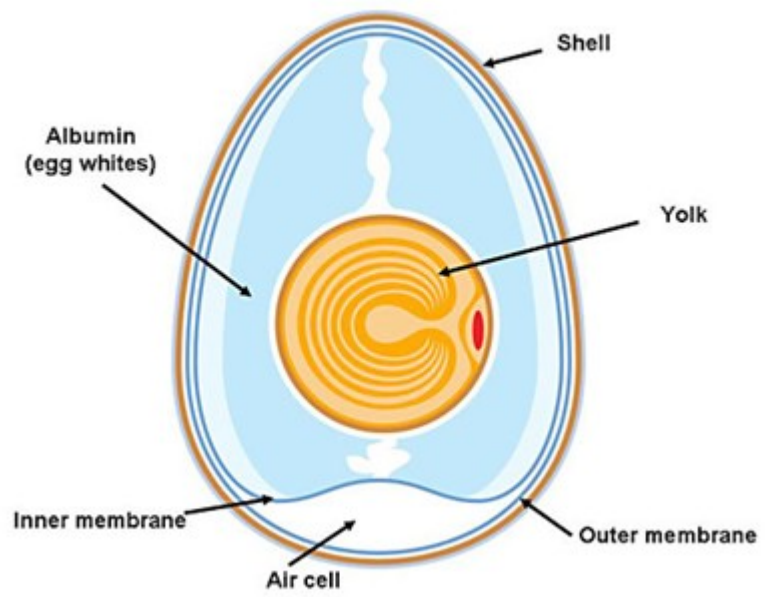
Ans: Yolk

- d) What is the developing baby called that grows in the yolk?

Ans: Embryo

MS. Margaret Das

5. Draw the 'Structure of an Egg'



Ms. Margaret Das